

Russian Post in Levant 1863-1914

Michael Kramarenko



Badge of ROPiT

In 1857, the Russian Company of Shipping and Trade (ROPiT) was organized, which carried out cargo and passenger transportations between the ports of Russia and other countries in the Black Sea, the seas of the Middle East and Greece (Levant countries). By agreement with the Main Directorate of Posts and Telegraphs of the Russian Empire, the company exchanged mail in all ports where it had its agencies and was the official representative of the Russian Empire Post in the region.

The exhibit is a chronology of Russian post in Levant issues. It presents the most interesting and rare examples of varieties, errors, types of stamps and overprints. All issues are illustrated with examples of postal circulation. A comprehensive description of all items is provided, including known rarity data.

The exhibitor is the author of a specialized “Russika” catalog, according to which this exhibit is described. Most of the presented varieties, errors, etc. are described only in the above catalog, and are the author’s specialized version of the description of this section.

The author’s researches are marked with a special sign - 

PLAN

1. Parcel Correspondence to East Issues			
1.1. 1863. First Edition	2	3.B.3. Fifth Edition	27
1.2. 1864. Second Edition	3	5.A. Special Issues with Additional print of Turkish currency on Russian stamps	
1.3. 1 st & 2 nd Editions. Postal circulation	4	5.A.1. 1900. First Edition	29
1.4. 1867. Third Edition	5	5.A.2. 1864. Second Edition	33
2. ROPiT Issues		6. ROPiT Jubilee Issues	
2.1. 1864. First Edition	6	6.1. 1909. Jubilee Issue	41
2.2. 1866. Second Edition	7	6.2. 1909-10. “Towns”. Overprints on Jubilee Issue	45
2.3. 1867. Third Edition	9	5.B. Special Issues with Additional print of Turkish currency on Russian stamps continue	
3.A. “Eastern Correspondence” Issues		5.B.1. 1910. Third Edition	62
3.A.1. 1868. First Edition	10	5.B.2. 1910. Forth Edition	63
3.A.2. 1872. Second Edition	12	5.B.3. 1912. Fifth Edition	69
4. Constantinople Local Overprints		5.B.4. 1910-12. Newprints of 4 th & 5 th Editions	70
4.1. 1876. First Edition	15	5.B.5. 1913. Sixth Edition. Romanov’s Jubilee	71
4.2. Second Edition	16	5.B.6. 1913-14. Sevens Edition	79
3.B. “Eastern Correspondence” Issues continue			
3.B.1. Third Edition	18		
3.B.2. Forth Edition	20		

Literature:

1. Kramarenko M. “Russika”. Specialized catalog of postal signs. 1845-1924. Ukraine. 2023.
2. Tchilinghirian S.D., Stephen W.S.E. “Stamps of the Russian Empire used abroad”. BSRP. 1957-1960.

1. Parcel Correspondence to East Issues

1863-67.

6 kop. Typo. Chalky paper. Imperf. 3 Editions.

1.1. 1863. First Edition. #1.

Thin paper.
Thin chalky coverage.
Regular color light blue.

Sheet 1 x 4.
Positions
of types
of cliché.

Type I
Type II
Type III
Type IV



Type IV. Pos. 4.
Blue. Very rare color.

#1 Full sheet. Light blue.
Light blue. About 8-10 sheets
known. (Holcombe cert.)



4 types of cliché exist for 4
positions in sheet. For every
edition position differ.



Type I. Pos. 1.



Type II. Pos. 2.



Type III. Pos. 3.



Type IV. Pos. 4.

**No mail with #1
recorded yet.**

1.2. 1864-65. Second Edition. #2.

Medium paper. Medium chalky coverage. Regular color blue.

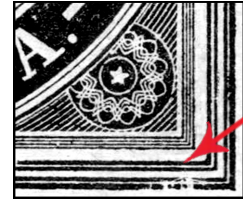
Because of wear of printing form, in a 2nd Edition the additional varieties of types of cliché appeared. *M&L*

Sheet 2 x 2
Positions of types of cliché.

Type IIIa	Type IVa
Type II	Type I



Type IIIa - white spot
right of "OC" *M&L*



Type IVa - broken frame
in right down corner

REPEARED SHEET
OF SECOND EDI-
TION SHOW SUB-
TYPES OF CLICHE

Type IIIa.
Pos. 1.



Type IVa.
Pos. 2.



Type II.
Pos. 3.



Type I.
Pos. 4.

1.2.1. Print Errors



Type IIIa - Error of
cliché - overhead
line in "E"
triangular form.

M&L



No mail with #2
recorded yet.

1.3. Postal Circulation

First and second issue stamps were affixed to the joint of the folded parcel and most were destroyed upon opening. There are several dozens of whole canceled stamps of the first issue, and half as many stamps of the second issue.



#1. Type I. Pos. 1. Cancel
"Port-Smyrne". 3.9.1864.
3 copies known.



Known types of
cancels of #1,2.



#1. Type II. Pos. 2. Cancel
"Constantinople".
3.12.1863. (ex. Faberge).
14 copies known.



#1. Type IV. Pos. 4.
Cancel "Port-Trebisonde".
1.11.1865. **3 copies known.**



#2. Type IVa. Pos. 2.
Cancel "Constantinople".
23.V.?? **8 copies known.**

1.4. 1867. Third Edition. #3.

Thick paper. Thick chalky coverage. Regular color deep blue, ultramarine.

Sheet 2 x 2
Positions of types of cliche.

Type IVa	Type IIa
Type III	Type Ia



Type IIa - curved end of "Л" separated.



Type Ia - white stroke under the "П".

REPEARED SHEET OF THIRD EDITION
SHOW DIFFERENT SHADES, WITH SUBTYPES



Type IVa. Pos. 1.
Ultramarine.



Type IVa. Pos. 1.
Deep blue.



Type IIa. Pos. 1.
Blue. Rare color.



Type III. Pos. 3.
Ultramarine.



Type III. Pos. 3.
Deep blue.



Type Ia. Pos. 3.
Ultramarine.

Out of postal circulation. No mail with #3 recorded yet.

2. ROPiT Issues

2.1. 1864-65. # 4-5.

First Issue without face value. Litho. Imperf. Thin paper.



#4 (10 para).
Greenish blue
center



Dark greenish
blue center



Red center



Orange red center



Pair on piece.
Pos. 10,11.
Used "Chios".



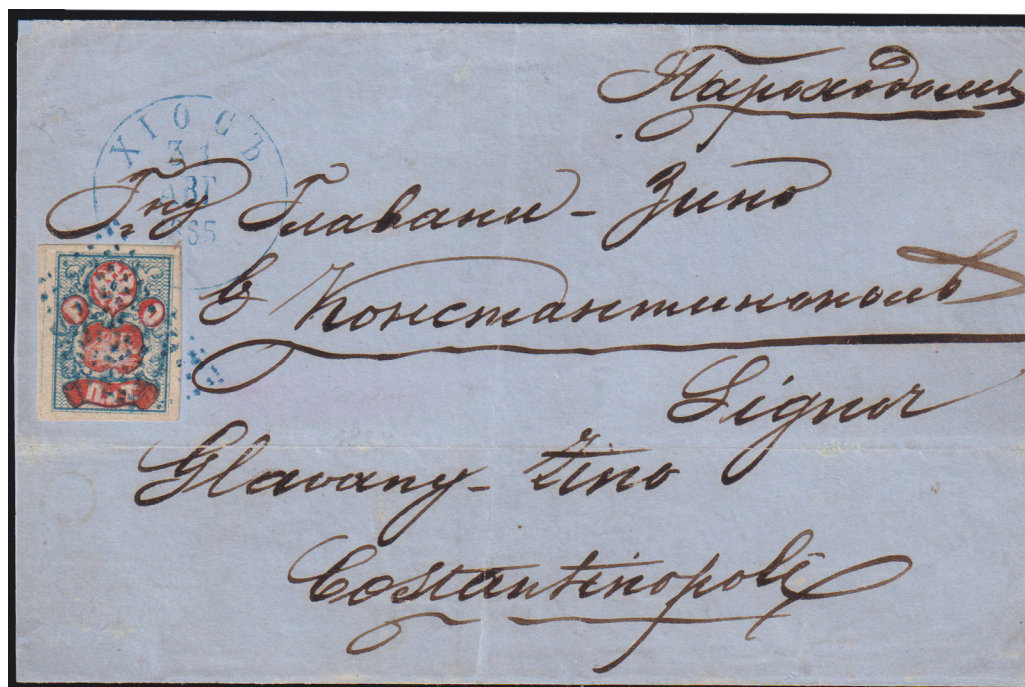
Corner copy.
Pos. 7. Dotted rhomb
cancel "Constantinople".



Used "Chios".



Left margin.
Pos. 22. Dotted rhomb
cancel "Constantnople".



31.8.1865. Letter from Chios to Constantinople. Tariff: 2 piastres for the ordinary letter between the ROPiT agencies in the see ports. Franked for 2 piastres by #5. Cancel "Chios". The additional dotted rhomb cancellation in blue of the arrival in Constantinople.

2.2. 1866. # 6-9.

Second Issue without face value. Litho. Imperf.
Background with horizontal network.

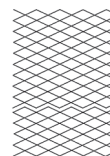
2.2.I. First Edition. # 6-7.

The figured elements with letters have shading inwardly.

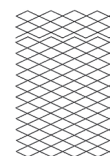


#6. Upper left pane of 8 (4x2)
with margin. Pos. 1-4,8-11.
Background type I continuous.

Background type I continuous.
Background type II consisting
of 2 separate parts. (MK)



Type II
for #6,8



Type II
for #7,9



#6a. Down left pane of 6 (3x2)
with margin. Pos. 15-17, 22-24.
Background type II on pos. 15-17.



#6a. Pane of 6 (2x3).
Cancel "Port Lattaque".
Biggest known used pane.



Plate error - point on
the right above
a central mast (MK)



Background
shifted to left. (MK)



#7. Blue &
light rose.



#7a. Light blue
& brown rose.



#7. Pair. Backgr. type I.
Cancel "781" - Mersina.



#7a. Pair. Backgr. type II.
Cancel "Samsoun".

2.2.II. Second Edition. # 8-9.

The figured elements with letters without shading.



#8. Block of 4.
Pos. 3-4, 10-11.
Background type I.



#9. Block of 4.
Pos. 9-10, 17-18.
Backgr. type II on pos. 17-18



#8. Pair. Backgr. type I.
Cancel "785" -
Alexandria (Egypt).



#9. Pair. Backgr.
type I. Cancel
"780" - Smyrne.



#9. Pair. Backgr. type II.
Cancel "785" -
Alexandria (Egypt).



Background
shifted to left.

(M.K.)



1.7.1868. Letter from Odessa to Constantinople. Tariff: 2 piastres for the ordinary letter between the ROPiT agencies in the see ports. Franked for 2 piastres by #9. Dotted rhomb cancellation in blue of the arrival in Constantinople.

2.3. 1867. # 10-11.

Third Issue without face value. Litho. Imperf.
Background with vertical network.



#10. Proofs
with continuous background.



#10. Block of 4.
Very rare.



#10 Block of 4 with
blurred background.

Only 1 known. (MJK)



#10b. Vine red
& bright blue.



#10. Background shifted up. In the background pattern there are letters and drawings of a coat of arms and a steamship. This is not found on any other stamp of the issue. It is possible that this is a separate issue, or one of the positions in the sheet. (MJK)



200% increase



#11. Deep blue
& rose.



#11a. Ultramarine
& vine rose.



Background
shifted down.



Part of background
missed at down left

(MJK)

3.A. “Eastern correspondence” Issues

3.A.1. 1868. # 12-15.

First Issue. Typo. Chalky coated paper.
Wm horizontal verge. Line perf. 11¹/₂.



#12-15. SPECIMENS. Fragments of letters
of word “ОБРАЗЕЦЪ“. About 10 full sets known.



< #12-15. Ordinary paper (< 0,1mm). >



< #12-15. Thick paper (> 0,1mm). (MFL) >

3.A.1.1. Print & Perforation Errors



#13, 15. Shifted background. (MFL)



#15. Missed vert. perf
(ex. Faberge).



#11. Missed perf. at
left. 1 copy known.

(MFL)



#11. Without inner
frame right of “ЕИЦ”.

(MFL)

3.A.1. 1868. # 12-15.



#14. Pane of 15 (5x3). Cancelled by pen. With gum. Possibly redeemed in payment of the tariff, but due to the impossibility of labeling the shipment was given to the sender as such. Biggest known multiple of this value (ex. Faberge).



Normal



Error

#15. Stripe of 3. Dotted rhomb cancel "Constantinople". All three stamp have rounds unstead stars on the oval ERROR. (mjk)



6.7.1871. Letter from Smyrne to Marselle. Tariff: 10 kop. for the ordinary letter abroad from the ROPiT agencies. Franked for 6 kop. with #12, 14. Dotted numbered cancellation "780" - Smyrne. Also round dated cancel "Smyrne" on the back. Not complete franked. 10c. recovered from the addressee.

3.A.2. 1872. # 16-23.

Second Issue. Typo. Chalky coated paper.

Wm verge. Frame perf. 14½ : 15.

16-19 - Wm horizontal verge, # 20-23 - Wm vertical verge

3.A.2.1. Proofs



1 kop. Olive brown & light brown. Thick glossy paper w/o Wm. Imperf.



1 kop. Original color. Ordinary paper w/o Wm. Imperf.



1 kop. Black & black. Ordinary paper with horizontal verge Wm. 1 known copy.



5 kop. Original color. Thick ordinary paper w/o Wm. Imperf.

(mk)



10 kop. Black & pale rose. Thick glossy paper w/o Wm.



10 kop. Original color. Thick glossy paper w/o Wm. Imperf. corner copy.



10 kop. Deep blue & pale rose. Thick glossy paper w/o Wm.



16.12.1878. Letter from Constantinople to Taganrog. Tariff: 8 kop. for the ordinary letter from the ROPiT agencies to Russian port. Franked for 8 kop. with #16(3), #18. Round dated cancel "Constntinople".

3.A.1. 1872.
16-23.



< #16-19. Complete set with different shades. >

3.A.2.2. Print Errors



#18. Block of 4. Error -
curved upper part of vertical
line in "K" on pos. 4. *(MK)*



#18.
Background
shifted.

(MK)



#23. Wm Vertical verge. Block of 4.
Round dated cancel "Constantino-
ple". **Only 1 block of 4 known.**

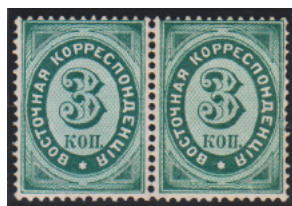


23.2.1876. Cover of letter from Constantinople to Wien. Combined tariff: 11 kop.: 3 kop. for the ordinary letter from the ROPiT agencies to Russian port + 8 kop. for ordinary letter abroad from Russia. Franked for 3 kop. with #17 & 1875 8 kop. imperial stamp. Round dated cancel "Constntinople". Very rare.

3.A.1. 1872.
16-23.



1878. Letter to Smyrne. Tariff: 10 kop. for the ordinary letter from ROPiT agencies to Abroad. Franked for 10 kop. with #19. Round dated arrival cancel "Smyrne".
Rare single frankig letter.



<

#20-23. Complete set mint. Very rare.

>

#21. Pair on piece. Round dated cancel "Constantinople" with inverted date. Extremely rare.



??5.1877. Cover of letter from Trebisonde to Persia. Special tariff: 5 kop. for the ordinary letter from the ROPiT agencies to Turkish post. Franked for 5 kop. with #22. Round dated cancel "Port Trebisonde" with inverted date.

One of 2 known letters with this subtype on cancel.

4. Constantinople Local Overprints

In connection with lowering of rate for sending of simple letters and shortage of necessary face values on the 10 kop. stamps of previous issue in Constantinople overprints of new face values were produced by a hand rubber cliché.

4.1. 1876. # 24-27.

First Issue. Ovpt. "8" black or blue on #19 (24, 25) & #20 (26,27).



#24.
Black Ovpt.



#25.
Blue Ovpt.



#25. Blue Ovpt.
Double, 2nd Inverted.
Extremely rare.



#26. Black Ovpt.
on stamp #23
with vertical Wm.



#25. Cancel
"Trebisonde".
Very rare.



26.2.1877. Cover of letter from Smyrne to Constantinople. Tariff: 18 kop. for the ordinary double weight letter 6 kop. plus 2 kop. for the ship mail between the ROPiT agencies in the alien ports. Franked for 18 kop. with #25(2) & #16(2). Round dated cancel "Smyrne". **Only 1 known letter with #25 in payment of said tariff.**

4.2. 1879. 20 March. # 28-35.

First Issue. Ovpt. "7" black or blue on:
type I #19 (28, 32) & #20 (29,33), type II #19 (30, 34), #20 (31, 35).

4.2.I. Type I - thick "7"



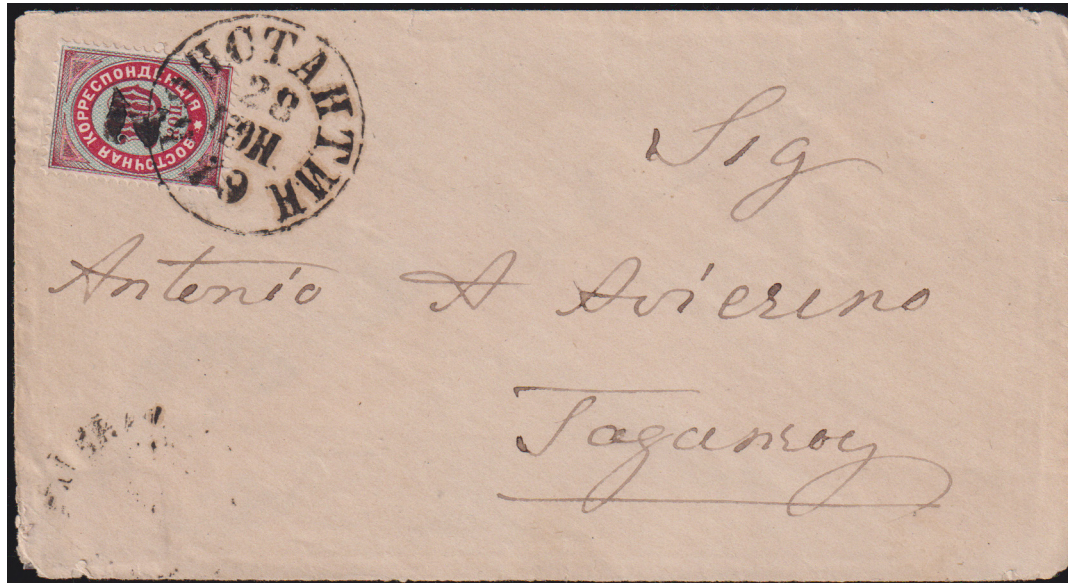
#32. Black Ovpt. on stamp
#23 with vertical Wm.

4.2.I.1. Print Errors



#28. Black Ovpt. Mint & Used.
Basic stamp with Plate error -
point in the middle of the star. (MK)

#29. Blue Ovpt.
Basic stamp error -
without frame line at right.



28.6.1879. Cover of letter from Constantinople to Taganrog. Tariff: 7 kop. for the ordinary letter from ROPiT agenciesto Russia. Franked for 7 kop. with #28. Round dated cancel "Constantinople".

4.2.II. Type II - thin "7"



#30. Black Ovpt. Very rare.



#31. Blue Ovpt. Very rare.



#30. Black Ovpt.
Used 6.9.1879 -
earliest known date of
usage for this stamp.

M&L



A fake from the late 19th century. The configuration of the Ovpt. is copied from a magazine article of the time.

M&L



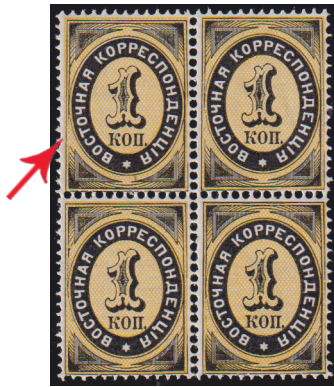
28.8.1880. Cover of letter from Constantinople to Odessa. Tariff: 7 kop. for the ordinary letter from ROPiT agencies to Russia. Franked for 7 kop. with #30. Round dated cancel "Constantinople" without ring. **One of 4 known letter with this stamp.**

3.B. “Eastern correspondence” Issues continue

3.B.1. 1879. # 36-41.

Third Issue. Typo. Chalky coated paper.
Wm verge. Frame perf. 14½ : 15.

36-38 - Wm horizontal verge, # 39-41 - Wm vertical verge



#36. Block of 4.
Without inner frame
line left of “СТО” on
each stamp. (MJK)



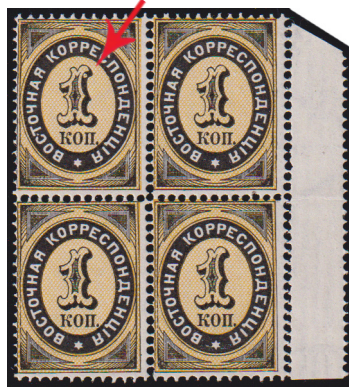
#37. Block of 4.
White spot between
“OH” (pos. 2), deformed
“II” (pos. 3). (MJK)



#38. Different shades.



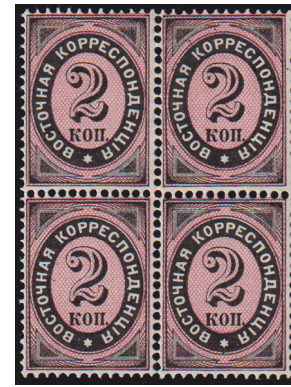
5.4.1882. Letter from Smyrne to Aleppo. Tariff: 7 kop. for the ordinary letter from ROPiT agencie to Turkey. Franked for 7 kop. with #38. Round dated cancel “Smyrne”.



#39. Block of 4.
White spot on "1". (MFL)



#39. Block of 4.
Without inner frame
left of "СТО". (MFL)



#40. Block of 4.
Very rare.



#41. Different shades.



Transparent print. (MFL)



3.B.1.1. Print Errors



#36, 38. Shifted background. (MFL)



#38. Outer
line of "7"
torn left
down. (MFL)



20.4.1883. Cover of letter from Samsoun to Constantinople. Tariff: 7 kop. for the ordinary letter between ROPiT agencies in alien ports. Franked for 7 kop. with #38. Round dated cancel "Samsoun".

3.B.2. 1884-91. # 42-49.

Forth Issue. Typo. Chalky coated paper.
Wm horizontal verge. Frame perf.

3.B.2.I. First Edition. # 42-45.

Frame perf. 14½ : 15.

3.B.2.I.1. Proofs



3 kop. Rose & Pale Rose. This proof is made in stamp color according to the 1880 decision of the Universal Postal Union on the harmonization of stamp colors and rates. The stamp was not issued in postal circulation. **One of two known copies.**



<

#42-45. Full set of Imperf. Proofs.

>



29.4.1885. Cover of registered letter from Constantinople to Mogilev-Podolsk. Tariff: 28 kop. for the registered (7 kop.) triple weight (21 kop.) letter from ROPiT agencies to Russia. Franked for 28 kop. with #45 (4). Oval dated cancel "Constantinople". Rare multifranked letter.

3.B.2.I.2. Specimens



#42-45. SPECIMENS. Fragments of letters of word “ОБРАЗЕЦЪ”. Overprint made on the vertical Gutters of the sheets. Other stamps annulated with pin holes.

3.B.2.I.3. Print Errors



#44. Shifted background. *(MFL)*



#38. Outer line of “7” torn left down. Same error as #38. *(MFL)*



24.4.1889. Cover of registered letter from Trebisonde to Salzburg. Tariff: 14 kop. for the registered letter from ROPiT agency to Abroad. Franked for 14 kop. with #45 (2). Round dated cancel “Trebisonde” & round stamp with dotted “R” for abroad correspondence.

3.B.2.I. First Edition. # 42-45.



Front side



Back side

Cover of ordinary letter sent from Russian monastic settlement Athos (Greece) to Bogorodsk, along the route: Athos - Constantinople (post rate free) 16.9.1893 - Odessa 18.9.1893 - Bogorodck (Imperial post) 22.9. 1893 - Bogorodsk (Rural post). Tariff 10 kop. for ordinary letter to Russia, plus 5 kop. tariff for rural post delivery. For to sending was delinered to Constantinople, where franked the #44 (2). Additional franking Bogorodsk rural post stamp 5 kop. Very rare.

3.B.2.II. Second Edition. # 46-49.

Frame perf. $14\frac{1}{4} : 14\frac{3}{4}$.

3.B.2.II.1. Control Marks



#46. Corner pane of 6 (3x2) with Control mark "4" near pos. 98. Also white spot at upper left corner on pos. 88. (MFL)



#47. Corner stripe of 5 with Control mark "4" near pos. 98.



#48. Corner pane of 10 with part of Control mark "4" or "1" near pos. 100. Also broken "K" on pos. 69 & dirty letters on oval on pos. 79.

(MFL)



#49. Corner stripe of 5 with Control mark "00" near pos. 97.



REGISTERED LETTER.

THIS LETTER MUST BE GIVEN TO AN OFFICER OF THE POST OFFICE TO BE REGISTERED, AND A RECEIPT OBTAINED FOR IT. THE ADDRESS MUST BE WRITTEN ON THIS SIDE.



2018



Madame Barissen
6, rue Chovel
Paris
FRANCE

FEE PAID.



Fee.	Limit of Compensation.
2d.	£5.
3d.	£10.
4d.	£15.
5d.	£20.
6d.	£25.
7d.	£30.
8d.	£35.
9d.	£40.
10d.	£45.
11d.	£50.



Inland Registration.

Subject to the Conditions published in the Post Office Guide as to Registration, compensation for loss or damage is given in respect of Inland Registered Packets of all kinds according to the following table:—

9.6.1898. Cover of registered letter from Constaantinople to Paris. Sent in Gret Britain 2 pence envelope. Tariff: 40 kop. for the registered triple weight letter from ROPiT agencie to Abroad. Franked for 30 kop. with #46 (20), #50 & 2 pence of GB currance counted for 10 kop. Round dated cancel "Constantinople" & round stamp with dotted "R" for abroad correspondence. Odessa transit cancel 12.6.1898. **One known mixed franking outgoing letter from Russian post in Levant.**



#48. Block of 4 with errors.
Dirty "A" on pos. 2 & deformed
"Я" on pos. 4. (MFL)



#48. Block of 4 with error.
Empty curl in "K" on pos. 1. (MFL)



#49. Block of 4 with error.
Without a contour line on the
left at "7" on pos. 1. (MFL)

3.B.2.II.2. Print Errors



#46, 47. Shifted background. (MFL)

#49. Mirror print
on gum side. (MFL)



25.6.1891. Cover of letter from Trebisonde to Constantinople. Tariff: 10 kop. for the ordinary letter from ROPiT agency to Turkey. Franked for 10 kop. with #48 (2). Round dated cancel "Trebisonde". Arrival round dated "Constantinople" cancel on back.

3.B.2.III. Fantastic Ovpt. on #46 in harm to the Philatelists
Ovpt. made at the end of XIX cent. Ovpt. increase face value for 10 kop.



#46F



#46F. pane of 15. Biggest known used multiple.



23.2.1896. Cover of philatelic letter from Constntinople to Ordy. Franked for 10 kop. #46F. Round dated cancel "Constantinople", oval dated arrival cancel "Ordu" on the back.



3.3. 1891. # 50.

Fifth Issue. Typo. Wm horizontal verge.

Frame perf. $14\frac{1}{4} : 14\frac{3}{4}$.

3.3.1. Specimens



#50. SPECIMEN. Imperf. pair with fragments of letters of word "ОБРАЗЕЦЪ" perforation.

3.3.2. Frame sizes

A stamp was printed a many editions in great quantity. Except for the large variety of colors known with the different sizes of frame.



16,25x22,75
mm



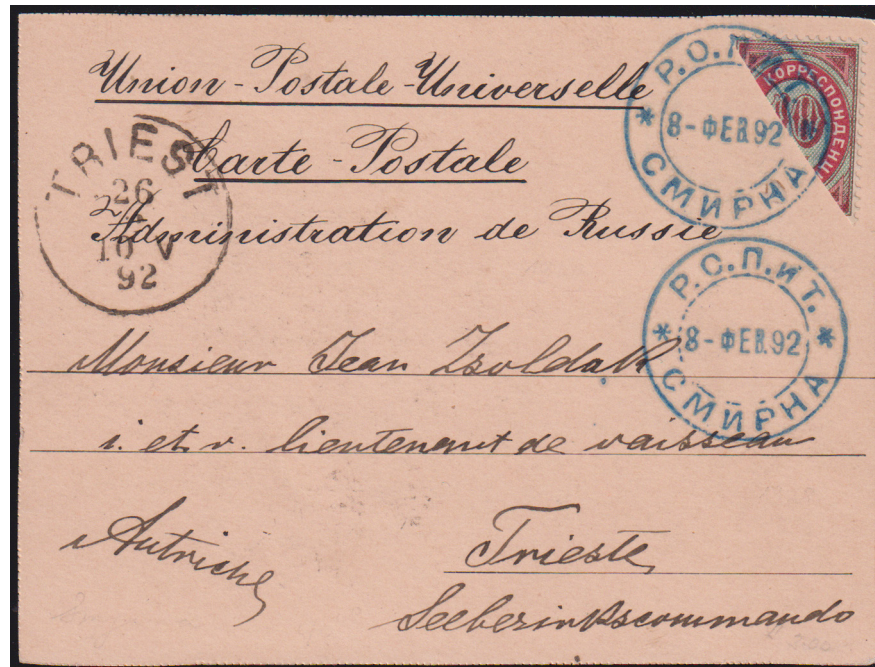
16,5x22,75
mm



16,25x22,5
mm



16,0x22,5
mm



8.2.1892. Postcard from Smyrne to Triest. Tariff: 5 kop. for the ordinary postcard from ROPiT agence to Abroad. Franked for 5 kop. with half of #50. Round dated cancel "Smyrne". Very rare.

3.3. 1891. # 50.



Front side



Cover of a registered letter from Athos to Kursk province. The letter traveled by steamship to Odessa, then by rail. It was delivered on 14.7.1900, but not handed over. Handwritten return inscription: "for failure to find the addressee". Sent back 16.7.1900. Transited through Odessa 16.7.1900 and Constantinople 19/22.7.1900. Returned 23.7.1900. Tariff: 20 kop. for registered letter from ROPiT agencies to Russia. Round dated cancel "Athos", registration Athos stamp #8748, round stamp with dotted "R" for abroad correspondence used by mistake. Also privial Athos monastery cache in violet. **One of the three known returned letters to Russian post in Levant.**

5.A. Special Issues with additional print of Turkish currency on Russian stamps

5.A.1. 1900. # 51-54.

First Issue "Para & Piastre". Typo. Wm horizontal verge.
Frame perf. $14\frac{1}{4}$: $14\frac{3}{4}$.

5.A.1.1. Specimens



#51, 53. SPECIMENS. Re-joined now separated Imperf. pairs
with parts of letters of word "ОБРАЗЕЦЪ" perforation.



27.12.1901. Cover of letter with printed matter from Ierusalem to Baden-Baden. Tariff: 8 para for the printed matter letter from ROPiT agencie to Abroad. Franked for 8 parawith of #51 (2) with blue "4 para". Round dated cancel "Ierusalem".

5.A.1. 1900. # 51-54.



6.5.1901. Cover of registered letter from Constantinople to Paris. Tariff: 50 kop. for quadruple registered letter from ROPiT agencies to Abroad. Franked for 50 kop. with #52 (26) with Black "4 para", #53 (7), #54. Round dated cancel "Constantinople". Constantinople registration each #3012. **Biggest known franking of #52.**

5.A.1. 1900. # 51-54.



5.12.1901. Postcard from Odessa to Wien. Sent at the steamship line “Odessa - Vladivostok”. Redirected to the austrian steamship company with cancel “PAQUEBOT”. Tariff: 4 kop. for ordinary postcard Abroad. Franked with #53 plus 1 kop. (2) imperial post. Round cancel “Steamship Odessa-Vladivostok”. **Unique franking combination on the few known mail.**



30.3.1904. Postcard from Metelin to Dardanelles. Tariff: 4 kop. for ordinary postcard between ROPiT agencies in the ports. Franked with #53 (2). Round dated cancel “Metelin” & rare arrival oval dated cancel “Dardanelles”.

5.A.1.2. Print Errors



#51. Pair with Inverted "4 para". Known only used.



#51. Pair with shifted "4 para".



#54. Shifted "1 piastre". *M&L*



#51. Block of 4 with shifted background. Only 1 Bl. of 4 known.

M&L



22.4.1902. Cover of letter from Smyrne to Jaffa. Tariff: 1 piastre for the ordinary letter between ROPiT agencies. Franked for 1 piastre with #54. Round dated cancel "Smyrne".

5.A.2. 1902. # 55-65.

Second Issue "Papa & Piastre". Typo. Wm vertical verge.
Frame perf. $14\frac{1}{4}$: $14\frac{3}{4}$ & $13\frac{1}{2}$.

**5.A.2.2.
Control
Marks**



#55. Corner stripe of 5 with Control mark "A.03И.". Very rare.



#55. Corner copy
with Control mark "2".

**5.A.2.3.
Print Errors**



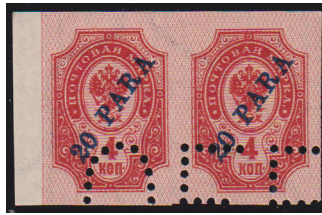
#55. Inverted
"10 para".



Back side

3.5.1905. Postcard from Metelin to Breteuil. Tariff: 10 para for printed matter postcard from ROPiT agencies to Abroad. Franked with #55. Round dated cancel "Metelin".

5.A.2.1. Specimens



#56. SPECIMEN. Imperf. pair with parts of letters of word “ОБРАЗЕЦЪ” perforation.

5.A.2.3. Print Errors



#56. Pair with Inverted “20 para”. 1 sheet known.



#56. Offset print “20 para”. *(m)*



15.2.1909. Cover of registered letter from Constantinople to Chicago. Tariff: 1 piastre 40 para for the registered letter from ROPiT agencies to Abroad. Franked for 1 piastre 40 para including #56 with Inverted print “20 para”. Round dated cancel “Constantinople”. **One of only 2 known letters.**

5.A.2.2.
Control Marks



#57. Corner pane of 10 (5x2) with Control mark "A.02Aa.". Very rare. (MJK)

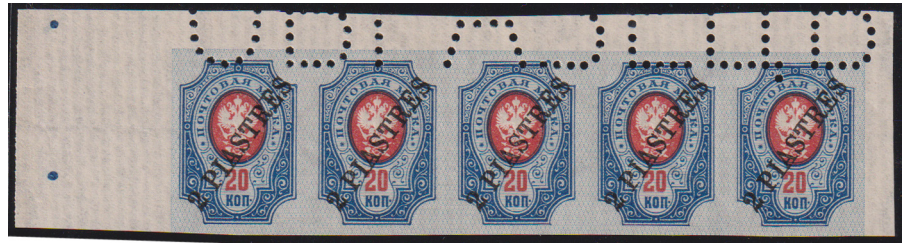


#57. Corner stripe of 5 with Control mark "A04Г.". Very rare. (MJK)



25.4.1905. Cover of registered hand made letter from Kerassunde to Kiev. Tariff: 2 piastres for the registered letter from ROPiT agencies to Russia. Franked for 2 piastres with #57 (2). Round dated cancel "Kerassunde". Very rare.

5.A.2.1. Specimens
 5.A.2.2. Control Marks
 5.A.2.3. Print Errors



#58. SPECIMEN. Imperf. stripe of 5 with parts of letters of word “ОБРАЗЕЦЪ” perforation.



#58. Shifted “2 piastres”. *МЖ*



#59. SPECIMEN. Imperf. pair with parts of letters of word “ОБРАЗЕЦЪ” perforation.



#56. Corner stripe of 9 with Gutter with Control mark “2 посл. 1 лиц.”.



#58. Block of 4 with Gutter with Control mark “2”.



#59. Corner pane of 8 (4x2) with Control mark “03A.”. Very rare.

Приложение къ циркуляру отъ 12-го мая 1898 года № 40.

Сопров — Купонъ
Peut être détaché par
МОЖЕТ БЫТЬ ОТРѢЗАНЪ
la destinataire
адресатомъ

Тимбре ду bureau d'origine:
ШТЕМПЕЛЬ ПОЧТОВАГО
УПРАВЛЕНІЯ ВЪ АТОСѢ

РОПИТ
АТХОС
POSTA

РОПИТ
АТХОС

Nom et domicile de l'expéditeur:
ЖИТЕЛЬСТВА ОТПРАВИТЕЛЯ

Андр. Раймон
Св. Екатерины К. К. К.
Ван. Св. К.

Сопроводительный
Bulletin d'exp.
ROSSIE
РОССІЯ

№ 687
Ст. Аеонъ
M^t Athos

РОПИТ
АТХОС

Nombre de déclarations en douane:
(число) таможенныхъ деклараций:

Объявленная цѣнность:
Montant du
Сумма наложеннаго
remboursement
платежа: А.

Наименованіе получателя.
Ант. Раймон
Въ Иерусалимѣ.
Терусовъ

(Lieu de destination):
(Мѣсто назначенія):
(rue et n°)
(улица и №)

Poids:
Вѣсъ:
1 lb 16 lots

Acheminement:
Путь:

4000 бл.—1/9 К.н. 145—24/4 910.

Тип. Акц. Ю.Р. О-ва Печ. Дѣла, въ Одессѣ.

Форма № 143.

23.10.1910. Parcel receipt from Athos to Ierusalem. Tariff: 9 piastres for the weight of 1 pound 16 lots for the parcel between ROPiT agencies in the ports. Franked for 9 piastres with #58 (2), 59. Round dated cancel "Athos", negative round cancel for parcel registration "Athos". Also local made registered label #687 of Athos. **One of 6 known parcel receipts from Athos.**

5.A.2.1. Specimens



#60. SPECIMEN. Imperf. pair with parts of letters of word "ОБРАЗЕЦЪ" perforation.



#60. SPECIMEN. Imperf. pair with parts of letters of word "ОБРАЗЕЦЪ" Overprint.



#61. SPECIMEN. Imperf. with parts of letters of word "ОБРАЗЕЦЪ" perforation.



26.3.1906. Cover of registered philatelic letter from Constantinople to Nurnberg. Sent with overpaid of the tariff. Franked for 25 piastres 30 para with #55-61. Round dated cancel "Constantinople".

5.A.2.1. Specimens



#62,63. SPECIMENS. Blue diagonal Overprint "ОБРАЗЕЦЪ" ade for UPU archive.



30.12.1905. 2 Cover of registered philatelic letters from Constantinople to Berlin. Both sent with overpaid of the tariff. Franked for 35 piastres with #62 & for 70 piastres with #63. Round dated cancel "Constantinople".

5.A.2.4. Additional Editions

10 para - basic 2 kop. stamp without corners in background,
1 piastre - basic 10 kop. stamp with inverted background.

5.A.2.4.1. Control Marks



#64. Corner pane of 6 (2x3) with Control mark “К.Т.О.Т.Лит.А.”.

5.A.2.4.2. Print Errors



#64. Inverted “10 para”.

mk



#55. Single Mint & Used pair with shifted “10 para”.

mk



11.10.1910. Cover of registered letter from Constantinople to Fuerth. Tariff: 1 piastre 40 para for the registered letter from ROPiT agencies to Abroad. Franked for 1 piastre 40 para with #64 (2), 65 & 56. Round dated cancel “Constantinople”.

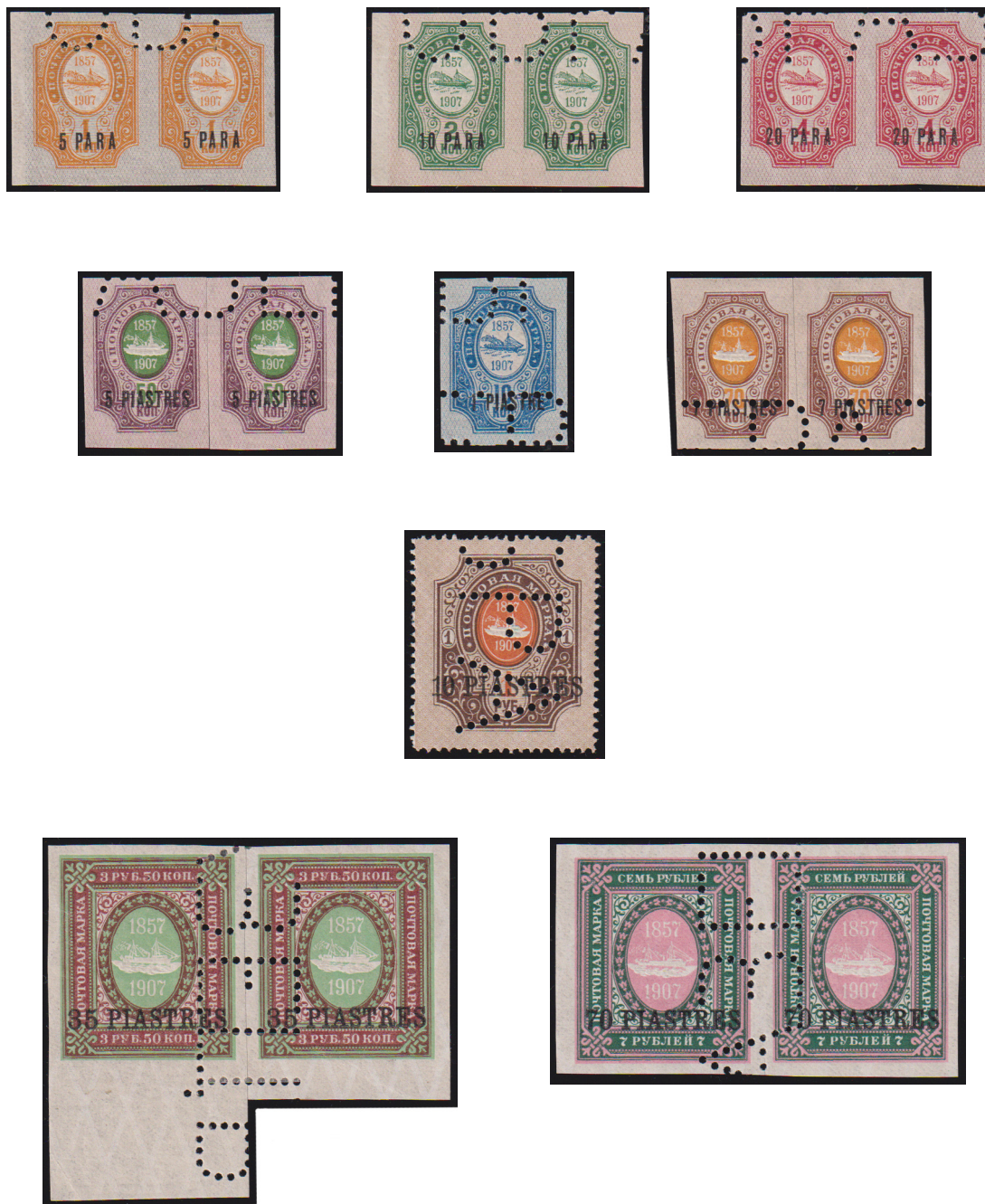
6. ROPiT Jubilee Issue

6.1. 1909. # 66-74.

Jubilee Issue. Typo. Vertical chalky network.
Frame perf. $14\frac{1}{4}$: $14\frac{3}{4}$ & $13\frac{1}{2}$.

The overprints of the Turkish denomination on the stamps are one piece. Without overprints in Turkish currency are unknown.

6.1.1. Specimens



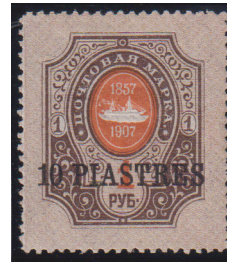
#66-74. SPECIMENS. Complete set of 9 with parts of letters of word “ОБРАЗЕЦЪ” perforation. 10 piastres value known only with perforation, all others only Imperforated. Very rare.

6.1.2. Print Errors



#66. Shifted background.

(MK)



#72. Double print of background.
One copy known.

(MK)



25.6.1909. Cover of registered letter from Constantinople to Regensburg. Tariff: 2 piastres for the registered letter from ROPiT agencies to Abroad. Franked for 2 piastres with #66 (20).

Round dated cancel "Constantinople". Registered label # 465 Constantinople.

Earliest known date of postal usage of this issue.

6.1.2. Print Errors



#67. Pair with shifted background. (MFL)



#68. Pair with Inverted background.



#67. Used block of 4 with shifted background. One Block of 4 known. (MFL)



27.10.1910. Cover of registered letter from Constantinople to Susak. Tariff: 1 piastre 40 para for the registered letter from ROPiT agencies to Abroad. Franked for 1 piastre 40 para with #69 & 75 (2). Round dated cancel "Constantinople".

6.1.2. Print Errors



#67. Block of 4 with Inverted
Ovpt. "10 para". Only 2
Blocks of 4 known.



2.7.1909. Cover of registered letter from Constantinople to Munchen. Tariff: 1 piastre 40 para for the registered letter from ROPiT agencies to Abroad. Franked for 1 piastre 40 para including #67 with Inverted Ovpt. "10 para". Round dated cancel "Constantinople".

One of 4 known letters.

6.2. "TOWNS" Overprints on #66-74

In 1909-10, the names of 13 different cities in which the company had offices were printed in a private printing house in Odessa by order of ROPiT.

6.2.I. 1909. "Constantinople". Black Ovpt.

6.2.I.1. Print & Overprint Errors



#66 I, 68 I with Inverted Ovpt. "Constantinople".



#66 I on stamp with shifted background.



#67 I, 71 I with shifted Ovpt. "Constantinople". M&K



#70 I with Error "Constantinople" (pos.4).

M&K
Error of Overprint
Constantinople



#66 I Inverted Ovpt. with Error "Constantinople".



#71 I with Error "Constantinople" (pos.4).



10.11.1910. Postcard from Constantinople to Graz. Four colors franking with #66-69 I. Round dated cancel "Constantinople".

6.2.I.1.
Print &
Overprint
Errors



#73 I. Pair with Error Ovpt. "Constautinople" (pos.2). *mk*



#74 I. Pair with Error Ovpt.
"Constantjnople" (pos.2). *mk*



#74 I. Pair with with broken "i" in Ovpt. (pos.1)
& Error "Constautinople" (pos.2). *mk*



28.5.1910. Cover of registered letter from Constantinople to Mannheim. Tariff: 2 piastres for the registered letter from ROPiT agencies to Abroad. Franked for 2 piastres with #69 I (2). Round dated cancel "Constantinople". Registered label #51 Constantinople.

6.2.II. 1909. "Ierusalem". Black Ovpt.

6.2.II.1. Print & Overprint Errors



#69 II. Shifted value "1 piastre".

(mH)



#71 II. Without value "7 piastres". One of 10 possible exist copies.



#67 II. Wm shifted on stamp. *(mH)*

Error of Overprint
erusalem



#66-68 II. Pairs & Block of 6 with Error - "_erusalem". In Block of 6 four errors on pos. 1,3,4,6.



4.5.1910. Postcard from Ierusalem to Paris. Three colors franking with #66-68 II. Round dated cancel "Ierusalem". Transit cancel "Alexandrie" (Egypt).

6.2.III. 1909. "Mont Athos". Black Ovpt.

6.2.III.1. Print & Overprint Errors



#66-67 III with Inverted
Ovpt. "Mont-Athos".

#67 III. Wm shifted
on stamp. *mk*

6.2.III.2. Overprint Types



#73-74 III. Error - curved line in "h".

#73-74 III. Error - broken middle part of "A".



10.5.1910. Cover of registered philatelic letter from Mont Athos to Bonn. Sent with overpaid of the tariff. Franked for 70 piastres with #74 III. Round dated cancel "Athos".

1 of only 3 covers with this stamp known.

6.2.III.1. Print & Overprint Errors

Error of Overprint **Mont-Atho**



#69-71 III. Pairs with Error - "Mont-Atho_".



#66 III. Pairs with Inverted Ovpt.
with Error - "Mont-Atho_".



#71 III. Quarter of sheet (5x5) with missing Ovpt. on pos. 16.

One known yet. (m&)

6.2.IV. 1909. "Salonique". Black Ovpt.

6.2.IV.1. Print & Overprint Errors



#66-67 IV with Inverted Ovpt. "Salonique".



#66-69 IV. Pairs with missing Ovpt.



8.11.1910. Cover of ordinary letter from Salonique to Odessa. Tariff: 1 piastre for the ordinary letter from ROPiT agencies to Russia. Franked for 1 piastre with #69 IV. Round dated cancel "Salonique".

6.2.V. 1909. "Kerassunde". Black Ovpt.

6.2.V.1. Print & Overprint Errors



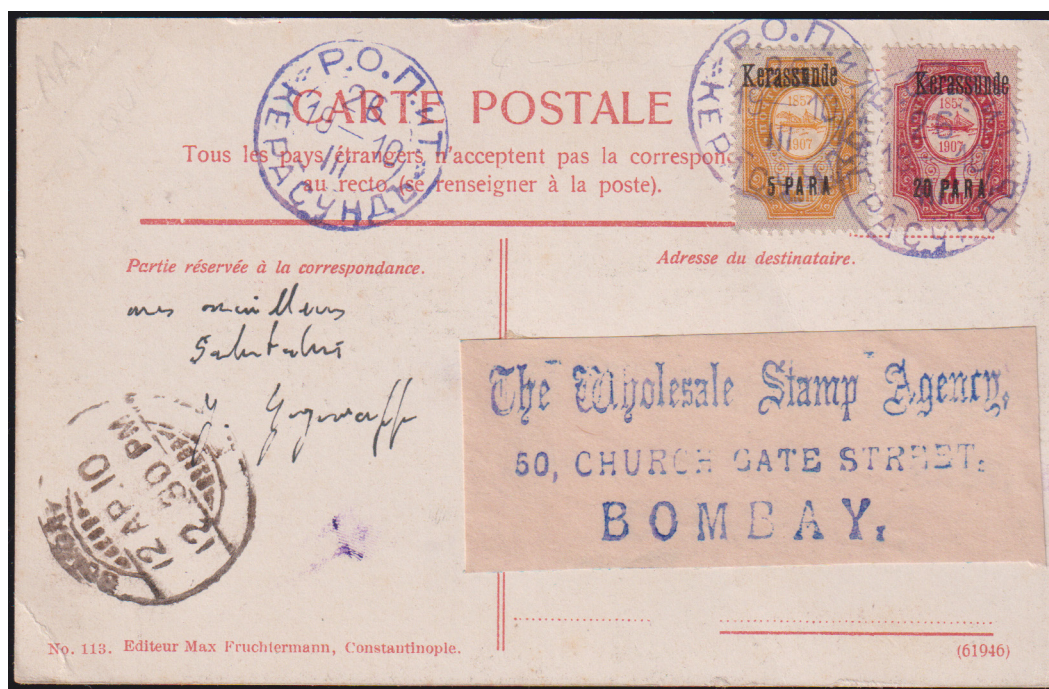
#67 V with Inverted
Ovpt. "Kerassunde".



#66 V, 68 V with shifted
Ovpt. "Kerassunde". (MK)



#66 V. Block of 4 with Error -
broken "as" (pos. 2,4).



26.3.1910. Postcard from Kerassunde to Bombay. Franked for 25 para
with #66 V, 67 V. Round dated cancel "Kerassunde". Very rare.

6.2.VI. 1909. "Trebisonde". Black Ovpt.

6.2.VI.1. Print & Overprint Errors



#66 VI, 68 VI with Inverted
Ovpt. "Trebisonde".

#70 VI. Wm shifted
on stamp. *mk*



#72-74 VI. Error - point over "0" in Overprint.

6.2.VI.2. Perforation Errors



#74 VI. Missing Perf. at down.
One of 5 known copies.

6.2.VI.1. Print & Overprint Errors



#66-67 VI. Blocks of 4 with missing Ovppt.



16.7.1910. Cover of registered letter from Trebisonde to Marolles les Braults. Tariff: 1 piastre 40 para for the registered letter from ROPiT agencies to Abroad. Franked for 1 piastre 40 para including #66(2)-69 VI. Round dated cancel "Trebisonde". Registered label #474 Trebisonde on front side.

6.2.VII. 1910. "Smyrne". Black Ovpt.

6.2.VII.1. Print & Overprint Errors



#66 VII with Inverted Ovpt. "Smyrne".



#72 VII with shifted Ovpt. "Smyrne". (MFL)

Error of Overprint Smyrn



#69 VII with Error "Smyrn_".

6.2.VII.2. Overprint Types

9 TYPES OF OVERPRINT EXIST (MFL)



#68 VII. Pane of 10 (5x2) used on piece shown all 9 types of Overprint.



12.6.1910. Cover of ordinary letter from Smyrne to Bruxelles. Tariff: 1 piastre for the ordinary letter from ROPiT agencies to Russia. Franked for 1 piastre with #69 VII. Round dated cancel "Smyrne".

6.2.VIII. 1910. "Jaffa". Black Ovpt.
 6.2.VIII.1. Print & Overprint Errors



#66 VIII, 68 VIII with Inverted
 Ovpt. "Jaffa".

#69 VIII Double #67 VIII with shifted
 Ovpt. "Jaffa".

(MFL)



#70 VIII. Wm shifted
 on stamp. (MFL)

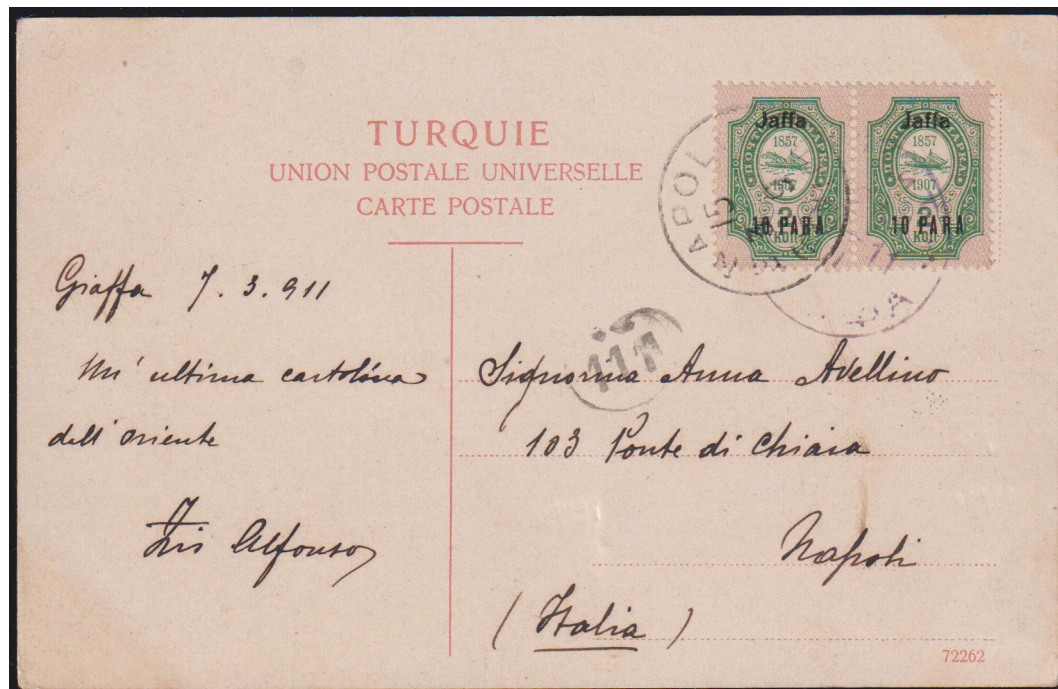
6.2.VIII.2. Overprint Types

Jaffa

Jaffa

Jaffa

Jaffa



24.2.1911. Postcard from Jaffa to Napoli. Tariff: 20 para for postcard from ROPiT agencies to Abroad. Franked for 20 para with #67 VIII(2). Round dated cancel "Jaffa".

6.2.IX. 1910. "Metelin". Black Ovpt.

6.2.IX.1. Print & Overprint Errors



#66 IX with Inverted
Ovpt. "Metelin".



#69 IX pair with shifted
background. (MFL)

OVERPRINT SUBTYPES & ERRORS



#66-67 IX with beveled
left strut of "M". (MFL)



#66, 69 IX Blocks of 4 with different type of "M"
in Overprint on pos. 3,4. (MFL)



#67, 69 IX Pairs with broken "n" like "r" in Overprint on pos. 2. (MFL)



6.2.IX.2. Overprint Types (MFL)



#73-74 IX the dot above the "i"
below the top of the "1".



#73-74 IX dot above "i"
at the level of the top of "1".



6.2.X. 1910. "Rizeh". Black Ovpt.

6.2.X.1. Print & Overprint Errors



#69 X Double print of chalky lines. 1 copy known.

(MFL)



#68 X pair with shifted background. (MFL)



#74 X Error - broken top of the "h".

(MFL)



#73-74 X Error - broken "h" like "l". (MFL)



#73-74 X Error - broken "h". (MFL)



14.11.1909. Postcard from Rizeh to Klagenfurt. Tariff: 20 para for postcard from ROPiT agencies to Abroad. Franked for 20 para with #68 X. Round dated cancel "Rizeh".

6.2.XI. 1910. "Ст. Афонъ". Black Ovpt.

6.2.XI.1. Print & Overprint Errors



#66 XI. Ovpt. on stamp with Inverted background.



#70 XI. Quintuple Overprint.
One copy known.

mk



#66-67, 69 XI. Blocks of 4 with missing Ovpt.



#70-71 XI. Blocks of 4 with missing Ovpt. on pos. 4. *mk*

6.2.XII. 1910. "Beyrouth". Black Ovpt.

6.2.XII.1. Print & Overprint Errors



#66 XII. Ovpt. on stamp with shifted background.



#67 XII Block of 4 with Inverted Ovpt. "Beyrouth".



#69 XII Block of 4 with Double Ovpt. "Beyrouth".
One Block of 4 known.



29.12.1910. Picture postcard from Beyrouth to New York. Tariff: 20 para for postcard from ROPiT agencies to Abroad. Franked for 20 para with #66 XII(4). Round dated cancel "Beyrouth" with inverted year. **One mail with this cancel error known.**

6.2.XIII. 1910. "Dardanelles". Black Ovpt.

6.2.XIII.1.
Print &
Overprint
Errors

#72 XIII Double
Ovpt. "Dardanelles".

(MЖ)



#73-74 XIII Error - broken
down right part of "s". (MЖ)

#68 XIII pane of 9 (3x3) - 2 upper rows with
missing Ovpt. & Inverted Ovpt. on 3rd row.
3 of only 10 vertical stripes of 3 known.



15.7.1911. Cover of registered letter from Dardanelles to Odessa. Tariff: 2 piastres for the registered letter from ROPiT agencies to Russia. Franked for 2 piastres with #66(2),67(2), 68-69 XIII. Round dated cancel "Dardanelles".

6.2.XIV. 1910.
Commercial
print, so-called
“PROOFS”.



#74 VI-VII.
Vertical pair with
2 different town's
names Ovpt.
Very rare.

#66-69 I-X. Vertical
stripes of 10 with 10
different Ovpts. of
town's names.
Ovpts. made from
used clichés & shown
some error such as:
“Constantinopie”,
“_erusalem” &
“Kerassunde” with
bkoken “as”.
Extremely rare.



5.B. Special Issues with additional print of Turkish currency on Russian stamps continue

5.B.1. 1910. # 75-76.

Third Issue "Papa & Piastre". Typo. Wm vertical verge. Frame perf. 14¹/₄ : 14³/₄.

5.B.1.I. 1st Edition. Basic stamp 1902



#75. Corner Block of 4 with Control number "A06A".

5.B.1.II. 2nd Edition. basic stamp 1905 - without corner in background *(mfl)*



#76. Two different shades.



#76. Only One known used pair.



12.1.1911. Postcard from Constantinople to Alpes Moulines. Tariff: 20 para for printed matter postcard from ROPiT agencies to Abroad. Franked for 20 para with #76. Round dated cancel "Constantinople". Only One known mail with #76.

5.B.2. 1910. # 77-83.

Forth Issue “Papa & Piastre”. Typo. Vertical chalky network.
Frame perf. $14\frac{1}{4}$: $14\frac{3}{4}$ & $13\frac{1}{2}$.

5.B.2.I. 1st Edition.

Horizontal paper structure.
Horizontal Wm on margins. 

5.B.2.I.2. Control Marks


5.B.2.I.1. Specimens



#78-79. SPECIMENS. Imperf. pairs with parts of letters of word “ОБРАЗЕЦЪ” perforation.

5.B.2.I.3. Print Errors



#79 I, 80 I with shifted print of Turkish value. 



#77 I. Corner pane of 6 (2x3) with Control mark “3 Кред.Тип.1910.”.

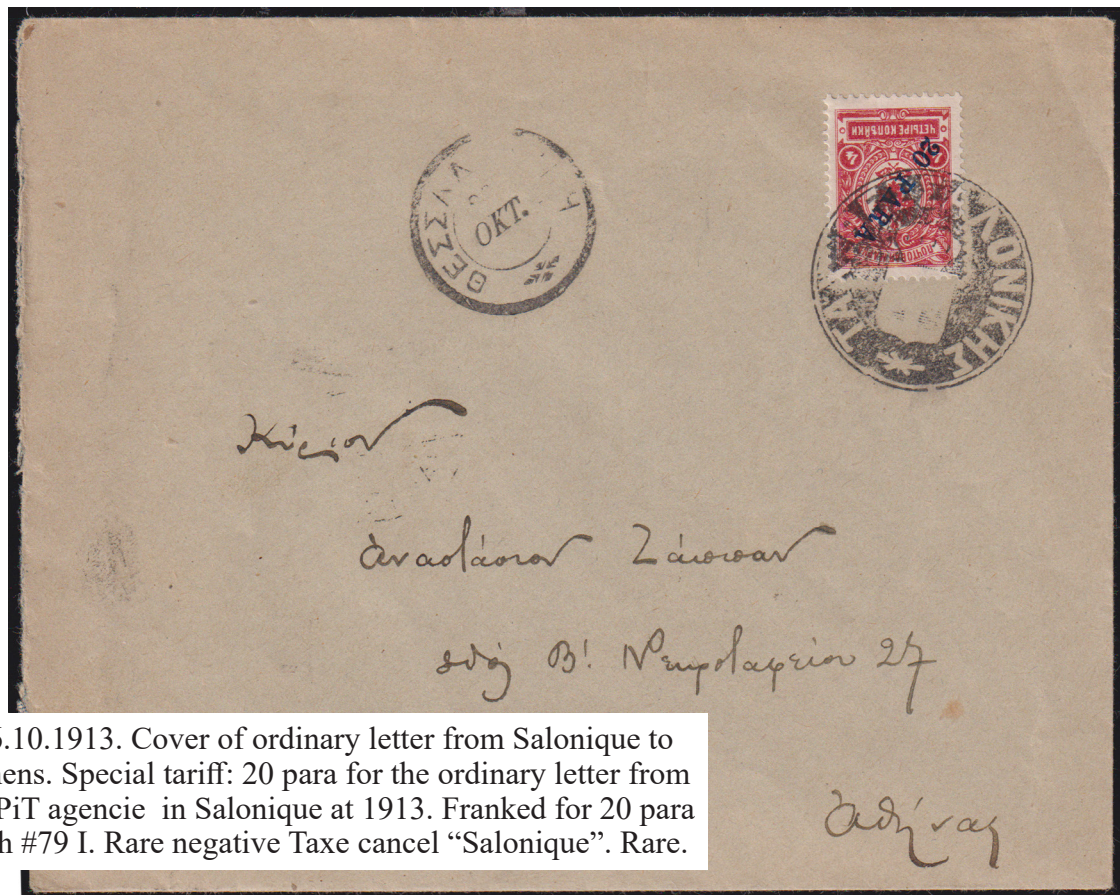


30.10.1911. Postcard from Constantinople to Munchen. Tariff: 20 para for postcard from ROPiT agencies to Abroad. Franked for 20 para with #7 I(4). Round dated cancel “Constantinople”.

5.B.2.I.2. Control Marks



#79 I (20 para). 2 Bottom stripes of 10 with Control marks "... Кред.Тип.1910."
 #80 I (1 piastre). Bottom stripe of 10 with Control mark "2 Кред.Тип.1911.". 3 copies known.



26.10.1913. Cover of ordinary letter from Salonique to Athens. Special tariff: 20 para for the ordinary letter from ROPiT agenceie in Salonique at 1913. Franked for 20 para with #79 I. Rare negative Taxe cancel "Salonique". Rare.



16.5.1913. Cover of registered letter from Metelin to Constantinople. Tariff: 1 piastre 30 para for the double weight letter between ROPiT agencies. Franked for 1 piastre 30 para with #78 I (3), 80 I. Round dated cancel "Metelin".

5.B.2.I.2. Control Marks



#81 I. Bottom stripe of 10 with Control mark “Кред.Тип.1910.”



#82 I. Bottom stripe of 10 with Control mark “Кред.Тип.1910.”

5.B.2.I.3. Print Errors



#83 I. Mirror print of Turkish currency. *mk*



21.12.1911. Cover of registered letter from Metelin to London. Tariff: 3 piastres 10 para for the double weight registered letter from ROPiT agencies to Abroad. Franked for 3 piastres 10 para with #79 I (3),80 I (2). Round dated cancel “Metelin”. Registered label #22 Metelin.

5.B.2.II. 2nd Edition.
Vertical paper structure. Vertical Wm on margins. 

5.B.2.II.1. Control Marks



#77 II. Corner Block of 4 with Control mark "2".



#77 II. "Accordeon" print.



#78 II. Corner Blocks of 4 with Control marks "1", "2", "2".



#78 II. Corner Block of 4 with Control mark "3" & Yellow chalky network.



#79 II. Corner Blocks of 4 with Control marks "1", "2".

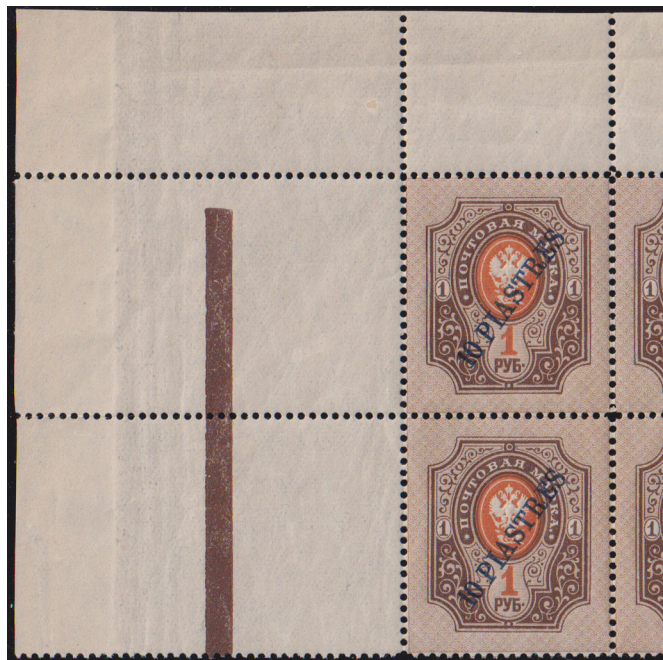
5.B.2.II.1. Control Marks. 5.B.2.II.2. Print Errors



#80 II. Corner Blocks of 4 with Control marks "1", "2", "I".



#80 II. Block of 4 with offset print of Turkish value. *M&L*



#83 II. Corner Block of 4 with single Brown Control line. Rare.



15.12.1910. Postcard from Shanghai to Dun le Palleteau. Franked over the tariff as for registered letter for 18 kop. Mistake use the Russian post in Levant stamp 1 piastre (#80) in Russian post in China. **Unique.**

5.B.3. 1912. # 84-88.

Fives Issue “Papa & Piastre”. Typo. Vertical chalky network.
Frame perf. $14\frac{1}{4} : 14\frac{3}{4}$.

The fifth issue, as well as the fourth, is known in two editions on paper with a horizontal and vertical structure. *(MH)*

5.B.3.2. Control Marks

5.B.3.1. Specimens



#85. SPECIMEN. Imperf. copy with parts of letters of word “ОБРАЗЕЦЪ” perforation.



#88. SPECIMEN. Perf. copy with parts of letters of word “ОБРАЗЕЦЪ” Overprint.

5.B.3.3. Print Errors



#87. Mirror print of Turkish currency. *(MH)*



#86 II. Corner Block of 4 with Control mark “5”.



31.5.1914. Cover of registered letter from Smyrne to Bruxelles. Tariff: 2 piastres for registered letter from ROPIT agencies to Abroad. Franked for 2 piastres with #88 I. Round dated cancel “Smyrne”.

5.B.4. Newprints of the 4th & 5th Issues

Newprint stamps of the fourth and fifth issues were produced after the closure of Russian post offices in the Levant to meet the needs of collectors. Newprint overprints are made on genuine 1914-19 issues. They differ from the genuine ones by the rougher execution of the fine details of the letters and numerals. Most often the overprint characters do not form a single line.

MFL



#78 ND. Inverted print of Turkish currency. Genuine stamp not recorded yet.



#80 ND. Inverted print of Turkish currency. Genuine stamp not recorded yet.



#81 ND. Stamp with vertical structure. Genuine stamp not recorded yet.



#83 ND. Made on the later issue stamp.



#82 ND. Stamp with vertical structure. Genuine stamp not recorded yet.



#85 ND. Inverted print of Turkish currency. Genuine stamp not recorded yet.



#87 ND. Double print of Turkish currency. Genuine stamp not recorded yet.



#88 ND Error. 3,5 piastres on 25 kop. stamp. Genuine stamp not recorded yet.

5.B.5. 1913. # 89-103.

Sixth Issue “Papa & Piastre”. Romanov’s Jubilee issue.
Typo, Engraved. Frame perf. 13.

5.B.5.2. Overprint Types

5.B.5.1. Print Errors



#91. Corner Block of 4 with shifted Turkish value.
Very rare. *mk*

All stamps of issue with Turkish currency print in 2 lines are known with different types, different on length and correlation of lines of this print. Described on a chart: length of 1st line, length of 2nd line, distance from the beginning of 1st to beginning 2nd line on a vertical line in mm.



#93. Type I -
16,0/14,5/0,75



#93. Type II -
15,75/14,5/0,75

mk



#94. Type I -
17,25



#93. Type I -
17,45



1913. #89 on postcard with rectangular cancel with text: “ОБРАЗЕЦЪ года 1913”.
Probably Specimen.



13.1.1914. Registered Stationery PC from Constantinople to Hannover. Tariff: 1 piastres 1 para for registered PC from ROPiT agencies to Abroad. Franked for 1 piastre 10 para with #90, 91 (2) & 20 para (PC). Round dated cancel “Constantinople”.



25.5.1913. Cover of letter from Tripoli to Patras. Tariff: 40 para for letter from ROPiT agencies to Abroad. Franked for 40 para with #89 (2), 90 & 92. Round dated cancel “Tripole”.
One of only two known mail from Russian post in Tripoli.



4.10.1913. Registered Stationery Closed letter from Constantinople to Jägerndorf. Sent with overpaid of the tariff. Franked for 7 piastres 15 para with #91, 94-96 & 1 piastre (PC). Round dated cancel "Constantinople".



6.6.1913. Cover of registered letter from Salonique to Bruxelles. Tariff: 1 piastre 40 para for registered letter from ROPiT agencies to Abroad. Franked for 1 piastre 40 para with #89 (2), 90, 92, 93. Round dated cancel "Salonique". Registered label #75 Salonique.



20.3.1913. Cover of registered letter from Constantinople to Chicago. Tariff: 4 piastres 40 para for registered triple weight letter with receipt from ROPiT agencies to Abroad. Franked with #92 (2), 95 (2). Rare tariff.



13.2.1913. Cover of registered letter from Constantinople to Chicago. Tariff: 5 piastres for registered triple weight letter with receipt from ROPiT agencies to Abroad. Franked with #94 (2), 8. Rare tariff.

5.B.5.2. Overprint Types *(M&L)*



#98. Type I -
16,75/16,75/0



#98. Type II -
16,75/16,75/-0,2



#98. Type III -
16,75/16,75/-0,4



#98. Type IV -
17,0/16,75/0,35



#98. Type V -
16,6/16,75/-0,1



#98. Type VI -
16,6/16,75/0,25



#98. Type VII -
16,5/16,75/-0,25



#98. Type VIII -
16,6/16,75/0,1



11.3.1913. Cover of registered letter from Constantinople to Mindelheim. Tariff: 6,5 piastres for registered quadruple weight letter with receipt from ROPiT agencies to Abroad. Franked with #94 & 98. Rare tariff. (ex. Faberge)

5.B.5.2. Overprint Types



#100. Type I -
28,5/22,5/3,75



#100. Type II -
28,25/22,5/4,1



#100. Type III -
28,25/22,5/3,75



#100. Type IV -
28,5/22,5/3,5



#100. Type V -
28,5/22,5/2,7



#100. Type VI -
27,8/22,5/4,25



#100. Type VII -
27,8/22,5/3,75



#100. Type VIII -
27,8/22,5/2,75



#100. Type IX -
28,0/22,5/4,5



#100. Type X -
28,5/22,5/3,5



#100. Type XI -
28,0/22,5/3,6



#100. Type XII -
28,5/22,5/3,25

M&L



23.2.1913. Cover of registered letter from Smyrne to Paris. Sent with overpaid of the tariff. Franked for 18 piastres 15 para with #91, 95-97, 100. Round dated cancel "Smyrne".

5.B.5.2. Overprint Types

#101. 11 Types known. (MFL)



#101. Block of 4 with types I, II, VI, IV.

Type I - 26,5/22,5/2,05

Type II - 26,5/22,5/2,25

Type VI - 26,75/22,5/1,4

Type IV - 26,5/22,5/1,9



#101. Type XI - 26,3/22,5/2,1
with Control mark "3". Rare.

(MFL)



5.4.1913. Cover of registered letter from Salonique to Ulm. Sent with overpaid of the tariff.
Franked for 20 piastres with #101. Round dated cancel "Salonique". (ex. Faberge)

5.B.5.2. Overprint Types MK



#102. Block of 4.



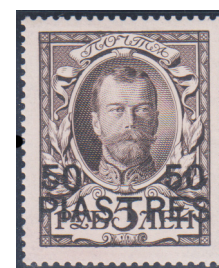
#103. Type I -
21,25/22,5/-1,0



#103. Type II -
21,25/22,5/-1,25



#103. Type II -
21,25/22,5/-0,75



#103. Type IV -
21,35/22,5/-0,45



6.4.1913. Cover of registered letter from Salonique to Saint Peterburg. Sent with overpaid of the tariff. Franked for 50 piastres 50 para with #89-92, 103. Addressed to national bureau of the Romanov's Jubilee. Round dated cancel "Salonique".

One of three mails with #103 known.

5.B.6. 1913-14. # 104-106.

Sevens Issue "Papa & Piastre". Typo.
Frame perf. $14\frac{1}{4}$: $14\frac{3}{4}$ & Line perf. $13\frac{1}{2}$.

**5.B.6.1.
Overprint
Types**



#104. SPECIMEN. Imperf. pair with parts of letters of word "ОБРАЗЕЦЪ" perforation.

**5.B.6.2.
Print
Errors**



#105. Double print of the frame.
One copy known. *(mjl)*



#105. Corner copy with Wm on margin.



4.12.1913. Cover of registered letter from Smyrne to Rome. Tariff: 1 piastre 40 para for registered letter from ROPiT agencies to Abroad. Franked for 1 piastre 40 para with #104 (2), 78, 80. Round dated cancel "Smyrne". **Earliest known mail with #104.**

5.B.6.2. Print Errors



#106. Double print of Turkish currency.
Copy with bottom Control mark on margin.
1 sheet (25 copies) exist.



#106. Corner Block of 4 with Control marks on margins.



14.2.1914. Cover of registered letter from Constantinople to Berlin. Sent with overpaid of the tariff. Franked for 100 piastres with #106. Round dated cancel "Constantinople".
Earliest known mail with #106. One of 5 covers with #106 known.